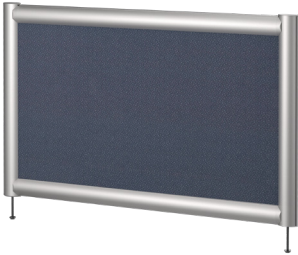


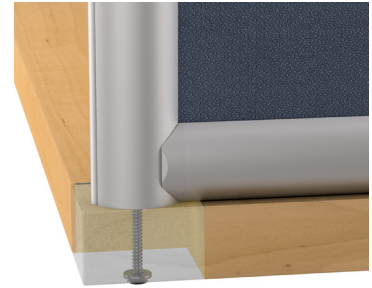
# TERRACE™ PANEL

## FRAMED DESK DIVIDER MOUNTING OPTIONS



### Bolt Through (B)

- Cost Effective
- Clean Look
- Permanent Mounting (requires drilling in worksurface)
- Locate anywhere on the desk
- Not available on some large size desk dividers
- Works on all thickness tops



Bolt Through (B)

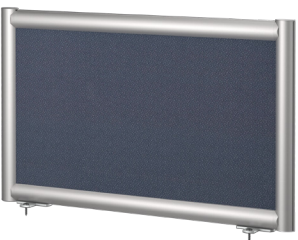


### Edge Clamp (CE)

- Fast & easy installation and relocation
  - Mount along the edge of work surface
  - Clamp fits 5/8" to 2" thick tops
  - Temporary or Permanent Mounting
  - No screwing or drilling into work surface required
  - Clamp position is adjustable
  - Kits include 2 or 3 Clamps depending on the size of the desk divider
- \*Patent Pending*



Edge Clamp (CE)

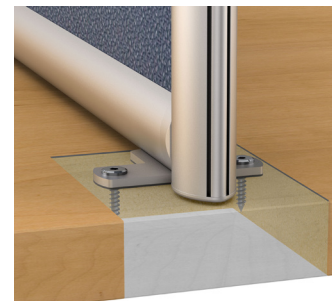


### Top Plates (T)

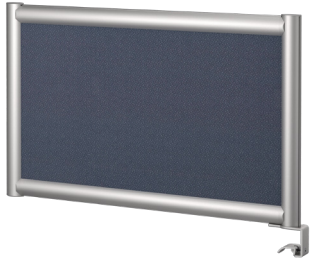
- Use for freestanding or permanent mounting
  - Locate anywhere on the desk
  - Work on all thickness tops
  - Rotate Top Plates for single or double-sided plates
  - Top plate positions are adjustable
  - Can be used to span two tables
  - Kits include 2 or 3 Clamps depending on the size of the desk divider
- \*Patent Pending*



Top Plate - Edge (T)

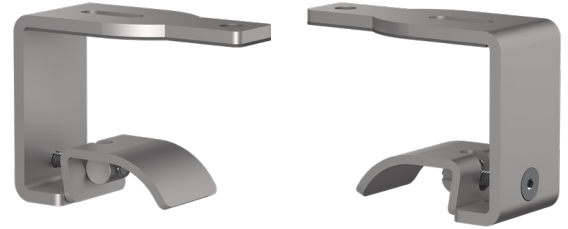


Top Plate - Middle (T)



#### Middle Clamp (CM)

- Fast & easy installation and relocation
  - Mount perpendicular to edge of work surface
  - Clamp fits 5/8" to 2" thick tops
  - Temporary or Permanent Mounting
  - No screwing or drilling into work surface required
  - Only one clamp required to secure a desk divider
- \*Patent Pending*



Middle Clamp (CM)