

# FLIP-N-NEST™ TABLE



## FLIP TOP TRAINING

Flip-N-Nest™ training tables provide a flexible option for your multipurpose meeting space. The nesting design allows you to efficiently store the tables when not in use, while the casters provide quick and easy transport and room reconfiguration when needed.

These durable, all-purpose, collaborative tables are designed for use in a wide variety of applications such as training rooms, conference room, mailrooms, classrooms, and computer labs.

### TABLE BASE

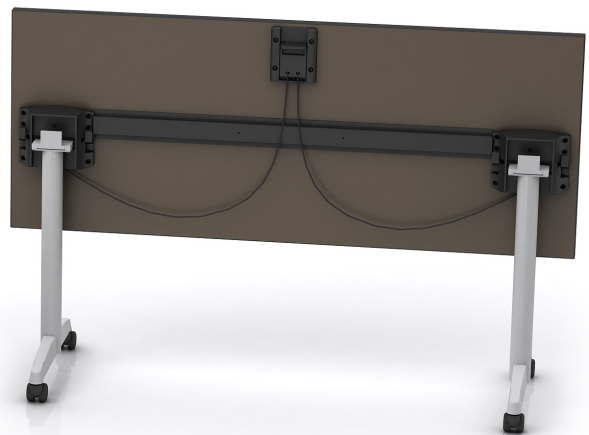
- Heavy duty EZ-Flip mechanisms
- Flip top one touch release handle
- Compact Nesting
- Powder coated Euro T-Legs
- 2" Locking Casters

### TABLE TOP

- High Pressure Laminate
- 3mm Edgebanding
- Top Thickness 1-1/8" (30mm)
- CARB Phase 2 emissions compliant IPB
- Anti-sag table top support on 60" & wider tables

### ADDITIONAL OPTIONS

- Power-up power/data module
- Modesty Panel
- Manual Height Adjustment



How to build your SKU:

Step 1:  
Choose your  
Model

FNN2000

Step 2:  
Choose your  
Shape

REC

Step 3:  
Choose your  
Width

72

Step 4:  
Choose your  
Depth

30

Step 5:  
Choose your  
Base Color

20

Step 6:  
Choose your  
Laminate

MW

Step 7:  
Choose your  
Edge Banding

MW

## FLIP-N-NEST™ TABLE

Model	Table Top Shape	Width	Depth	Base Color	Laminate	Edge Banding
FNN2000	Flip-N-Nest™ Table	48" 54" 60" 66" 72"	24" 30"	20 Pewter BK Black	BW Brite White FS Folkstone SG Stone Grafix G Graphite AM Amber Maple B Brazilwood BC Biltmore Cherry MW Montana Walnut AM Acajou Mahogany C Cafelle	BW Brite White FS Folkstone G Graphite AM Amber Maple B Brazilwood BC Biltmore Cherry MW Montana Walnut AM Acajou Mahogany C Cafelle NB Nubian Brown

# FNN-2000 FLIP TOP TRAINING TABLES WITH CASTERS

Model #	Width	Depth	Weight	Includes Laminate Finish	List Price
FNN2000-4824	48"	24"	66 lbs.		\$1,030
FNN2000-4830	48"	30"	76 lbs.		\$1,095
FNN2000-5424	54"	24"	71 lbs.		\$1,070
FNN2000-5430	54"	30"	82 lbs.		\$1,140
FNN2000-6024	60"	24"	81 lbs.		\$1,130
FNN2000-6030	60"	30"	94 lbs.		\$1,200
FNN2000-6624	66"	24"	86 lbs.		\$1,170
FNN2000-6630	66"	30"	100 lbs.		\$1,220
FNN2000-7224	72"	24"	91 lbs.		\$1,175
FNN2000-7230	72"	30"	106 lbs.		\$1,225

All bases are steel constructed with a powder-coated finish  
 All bases are Two-Leg T-Design with casters included

Table tops are constructed with 1-1/8" Industrial Grade particle board

HPL work surface (ANSI/NEMA) LD3-2005, for thickness, performance properties and appearance

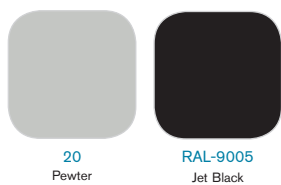
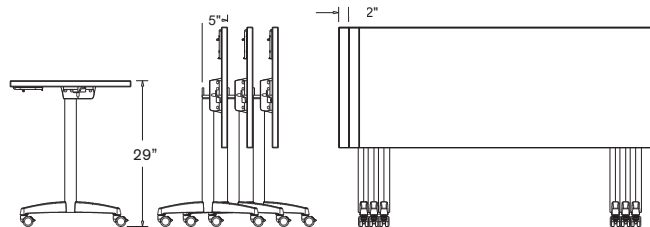
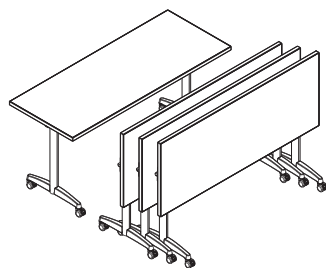
- NEMA LD3
- Phenolic Backer - balanced backer on the bottom side for the greatest resistance to deflection

#### Add-ons

Manual Height Adjustment - Standard Height 24-3/4" to 33-3/4" in 1" increments = add \$199



RECTANGULAR WORK SURFACE



#### LAMINATE FINISHES

